

Technical Data

Field programming application Enermet ROPmobile



At a glance:

- Performs basic programming and test command functions with the RO Ripple Control receiver family
- Runs on any PDA with Microsoft Windows Mobile 2003 and 2003 Second Edition or later version
- Connection from PDA to receiver via Bluetooth or RS-232 optical head
- Supported languages are:
English, French and German (further languages on request)

Main Features

The Enermet ROPmobile is a software application that can be installed on any PDA running Microsoft Windows Mobile 2003, 2003 Second Edition or later version. ROPmobile allows field staff to complete maintenance and programming activities on any RO Enermet Ripple Control receiver. A main advantage of ROPmobile is its flexible installation: the application is installed on a memory card and thereafter it can be easily loaded on any other PDA without a complete reinstallation.

Functions

The application allows the user to read and set the time, to set switch positions, and to read and write programs. These programs need first to be created with the ROP software on a PC and then downloaded to the PDA.

An intelligent comparison function checks the integrity of the program just read with the ones stored in the PDA. ROPmobile also supports project organisation, i. e. different programs can be classified and arranged under different project names (e. g. different systems, frequencies ...).

Environment

ROPmobile is a stand alone application that communicates with the RO receiver via an optical head.

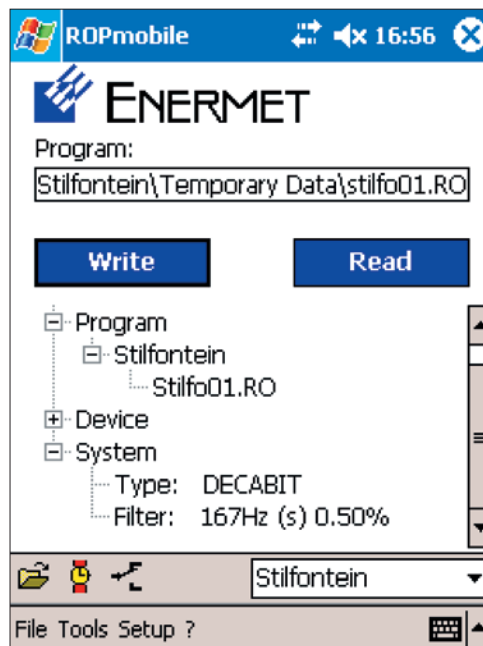
ROPmobile supports the following interfaces:

- Bluetooth
- RS-232
- USB

Field programming application Enermet ROPmobile



ROPmobile running on a PDA with a RO5 receiver



Technical Data

Interface towards optical head	<ul style="list-style-type: none"> ■ Bluetooth ■ RS-232 (directly connected or through CompactFlash card)
Supported Bluetooth optical heads	<ul style="list-style-type: none"> ■ ED Vogts 2510 ■ K01-Blue (P+E Technik) ■ M2C PMR_1 Version A
Interface towards PC running ROP	<ul style="list-style-type: none"> ■ Connection made with Microsoft ActiveSync ■ Connection can be made over any available media (i. e. RS 232, USB, Bluetooth ...)
Supported Enermet Receivers	<ul style="list-style-type: none"> ■ RO3, RO3S, ROA3, ROA3S ■ RO5, RO5S, ROA5, ROA5S
Supported ROP program	<ul style="list-style-type: none"> ■ From ROP v1.6
Receiver Programming Functions	<ul style="list-style-type: none"> ■ Writing a program to the receiver ■ Reading a program from the receiver ■ Comparison function
Receiver Commissioning Functions	<ul style="list-style-type: none"> ■ Reading and setting clock ■ Setting relays position

Landis+Gyr AG

Undermülstrasse 28
8320 Fehraltorf
Switzerland

Phone +41 44 954 8111
Fax +41 44 954 8101
info@landisgyr.ch
www.landisgyr.com/europe