

50 Cyanamid St
Laverton North
VIC 3026 Australia
PO Box 105, Newport
Vic 3015, Australia
d +61 3 8368 1650
m +61 424 225 850
f +61 3 8368 1699



manage energy better

Domestic Gas Meter Accessories Data Sheet

Meter Connection Kit

Part Number SK5



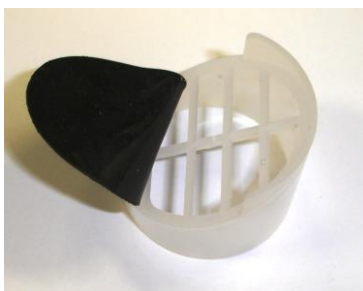
The SK5 connection kit consists of two cap nuts, liners and washers to convert a meters 10 Light connections to BSP.

2 x Liners with $\frac{3}{4}$ " BSP thread
2 x Cap Nuts 10 Light 1" to BS 746:1987
2 x 26e washers

SK5

Non-Return Valve

Part Number 750064



The Gas Meter model 750 and model 1010 can be supplied with an optional Non Return Valve (NRV). This accessory must be factory fitted i.e. it is not field retro-fittable. The Non Return Valve has minimal affect on pressure loss depending on flow rate.

750064

Electronic Pulse Output Kit

Part Number 750085



The output device is a magnetically actuated, voltage free reed switch where the electrical instrumentation attached provides the power to detect the opening and closing of the reed switch. The pulse output module is field retro-fittable. The pulse rate output is 1 pulse per 10 litres or 0.01 m3.

The Electronic Pulse Output Kit includes pulse module (IN-Z61), cable and plug (32446432), and screw (15006), bush and nut (BK Nut) for connection to the meters index. Two lead seals are also supplied one to seal the plug in place the second can be used instead of the screw and nut. This option is suitable for 750, 1010, & BK-G1.6 domestic gas meters.

50 Cyanamid St
Laverton North
VIC 3026 Australia
PO Box 105, Newport
Vic 3015, Australia
d +61 3 8368 1650
m +61 424 225 850
f +61 3 8368 1699



manage energy better

750085

Domestic Gas Meter Accessories Data Sheet

Meter Bars

Part Numbers 503700 / 503750 / 503800



503700 Regulator / Meter Bar without plug cap

- 3 x Cap Nuts (p/n 138)
- 3 x 3/4" Liners (p/n 503606)
- 3 x 26e Washers (p/n 26)
- 1 x 3/4" BSP Female to 10 Lt. Male Adaptor (p/n 503-6)

503750 Regulator / Meter Bar without plug cap

- 3 x Cap Nuts (p/n 138)
- 2 x 3/4" Liners (p/n 503606)
- 1 x 3/4" Liners (p/n 144-4)
- 3 x 26e Washers (p/n 26)
- 1 x 3/4" BSP Female to 10 Lt. Male Adaptor (p/n 503-6)

503800 Regulator / Meter Bar with plug cap.

- 3 x Cap Nuts (p/n 138)
- 3 x 3/4" Liners (p/n 503606)
- 3 x 26e Washers (p/n 26)
- 1 x 3/4" BSP Female to 10 Lt. Male Adaptor (p/n 503-6)
- 1 x Plug Cap (p/n 000209)

503700 503750 503800

50 Cyanamid St
Laverton North
VIC 3026 Australia
PO Box 105, Newport
Vic 3015, Australia
d +61 3 8368 1650
m +61 424 225 850
f +61 3 8368 1699



manage energy better

Domestic Gas Meter Accessories Data Sheet

Metal Wads

Part Number 178



To temporarily prevent gas flow use metal wads that can be installed in the meter inlet or outlet i.e. non-payment customers.

178

Pressure Pulse Limiters

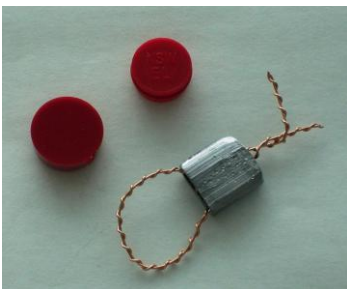
Part Number 179



To prevent meters internal mechanism from over-speeding or pressure damage, metal wads with a 3mm Ø hole can be installed in the meter inlet. This is designed for LPG installations with inlet pressures of 50 to 150 kPa.

179

Additional Sealing Options



In addition to the standard 3 red seals, a variety of sealing options are available such as man seals and lead seals.